



CT MOTION INJECTORS

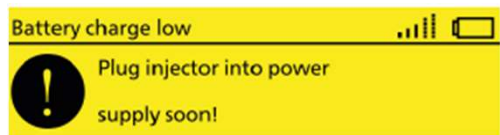
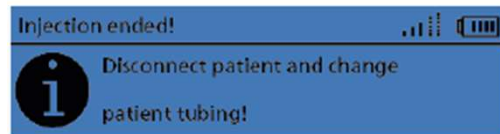
1/28/2022

Injector
Troubleshooting

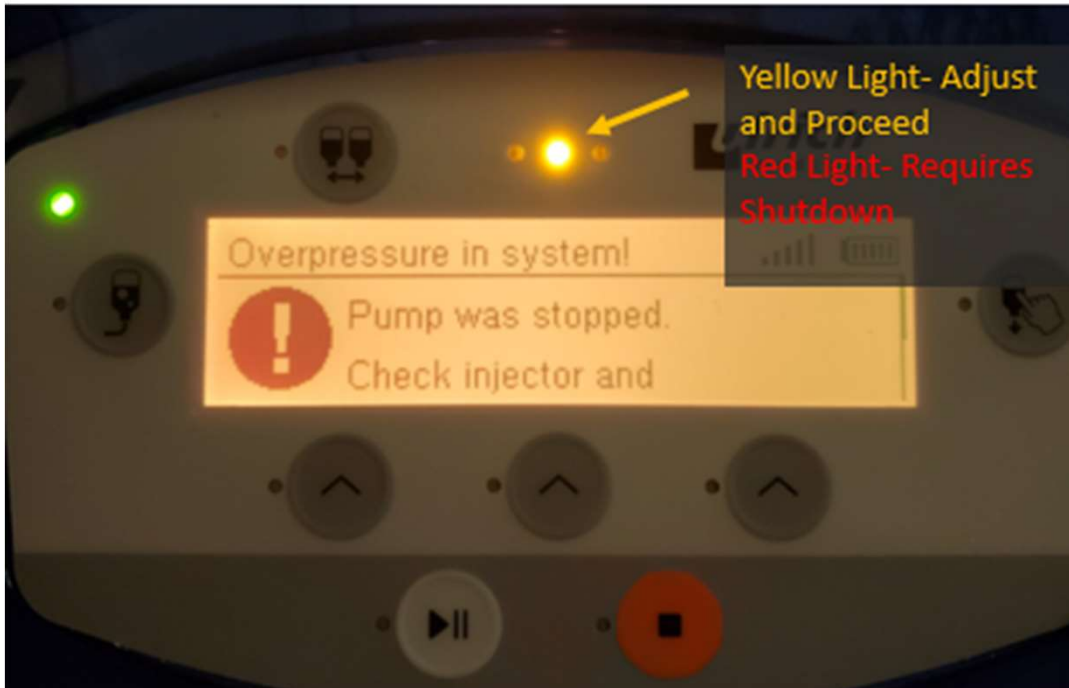
RIS PACS

Pairing to
another injector

Troubleshooting



- Information messages are blue
- Warning messages are yellow
- Error codes are red and will display A code number. Please refer to the Ulrich manual to determine the error.



Troubleshooting

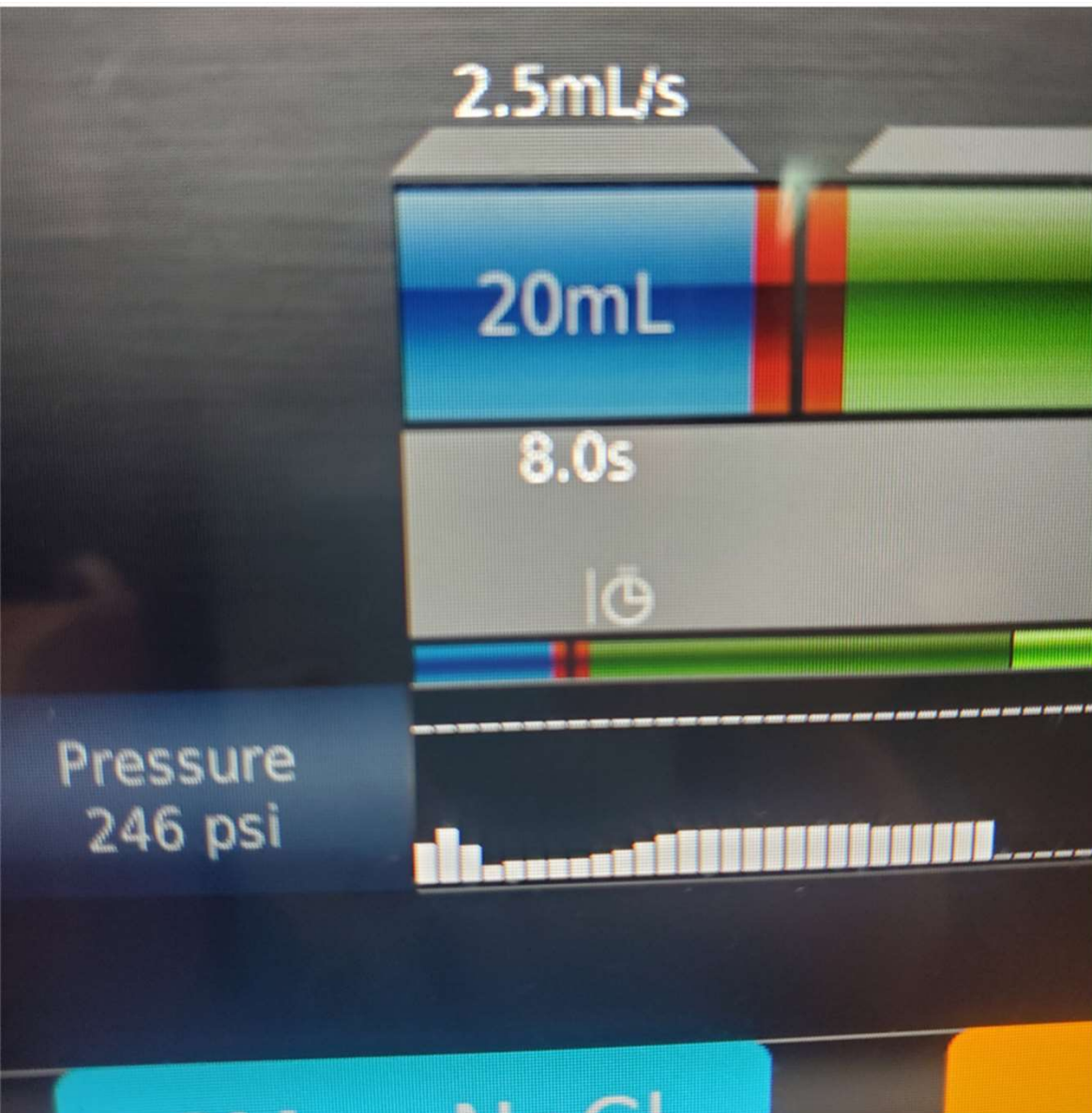
To fix overpressure in system error:

- re-prime
- open door to the injector, then close
- add new patient line
- arm injector



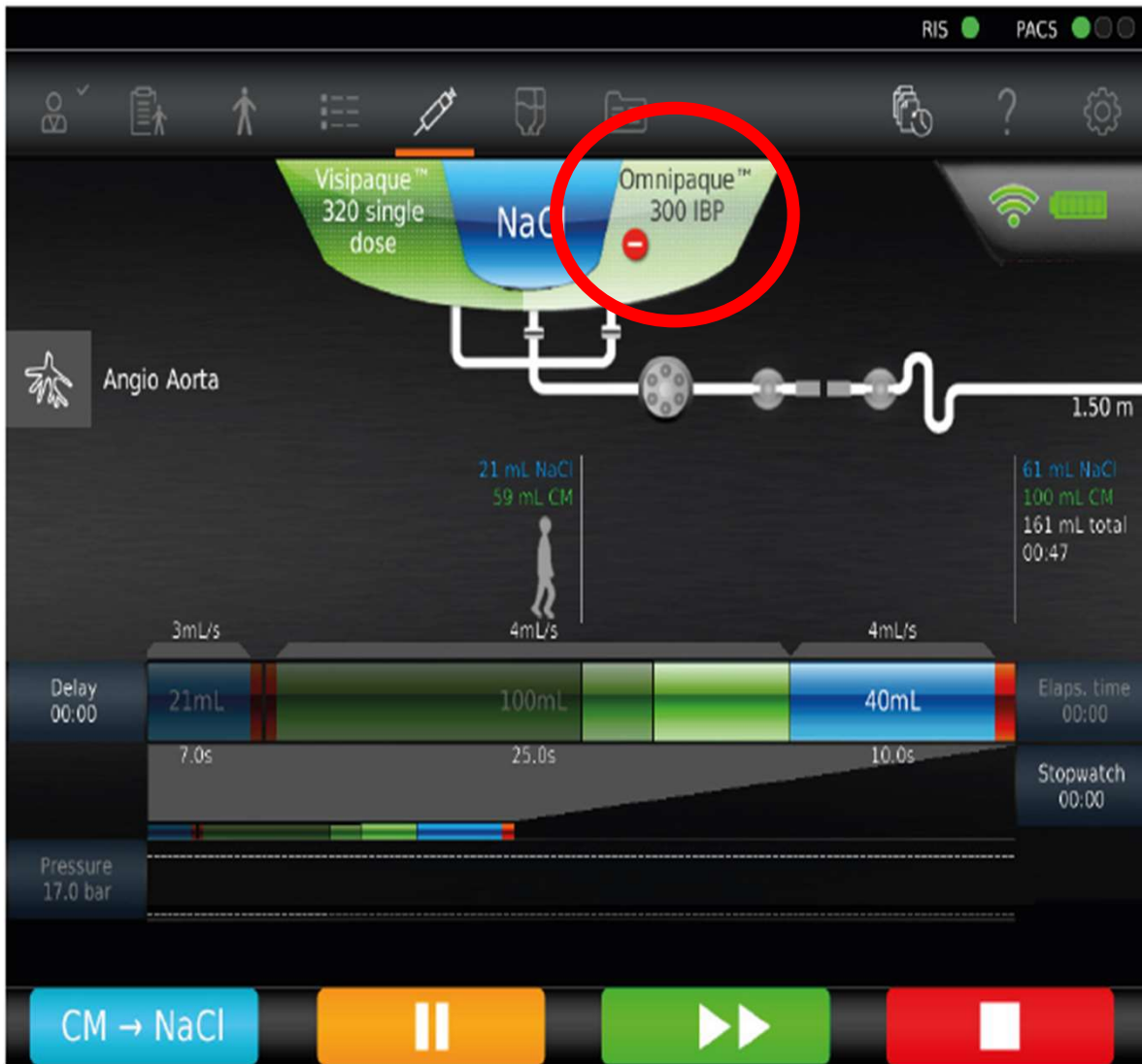
Troubleshooting

If the PSI pressure is greater than 75 PSI during the saline test injection, check the patient's IV.

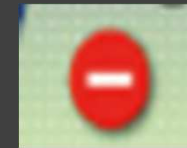


Troubleshooting

The PSI pressure is acceptable, below 75.



Troubleshooting



When you see this alert, be advised the injector is registering your contrast as a different strength and amount. It will not automatically pull from this vial once the other vial is empty. You will need to re-prime this vial.

RIS PACS

How to update RIS PACS when the patient list is not refreshing:

- Turn the monitor and injector off.
- Then turn monitor and injector back on.
- They will then re-pair. RIS PACS should now be working.
- If you have contrast primed, you will need to re-prime the tubing.

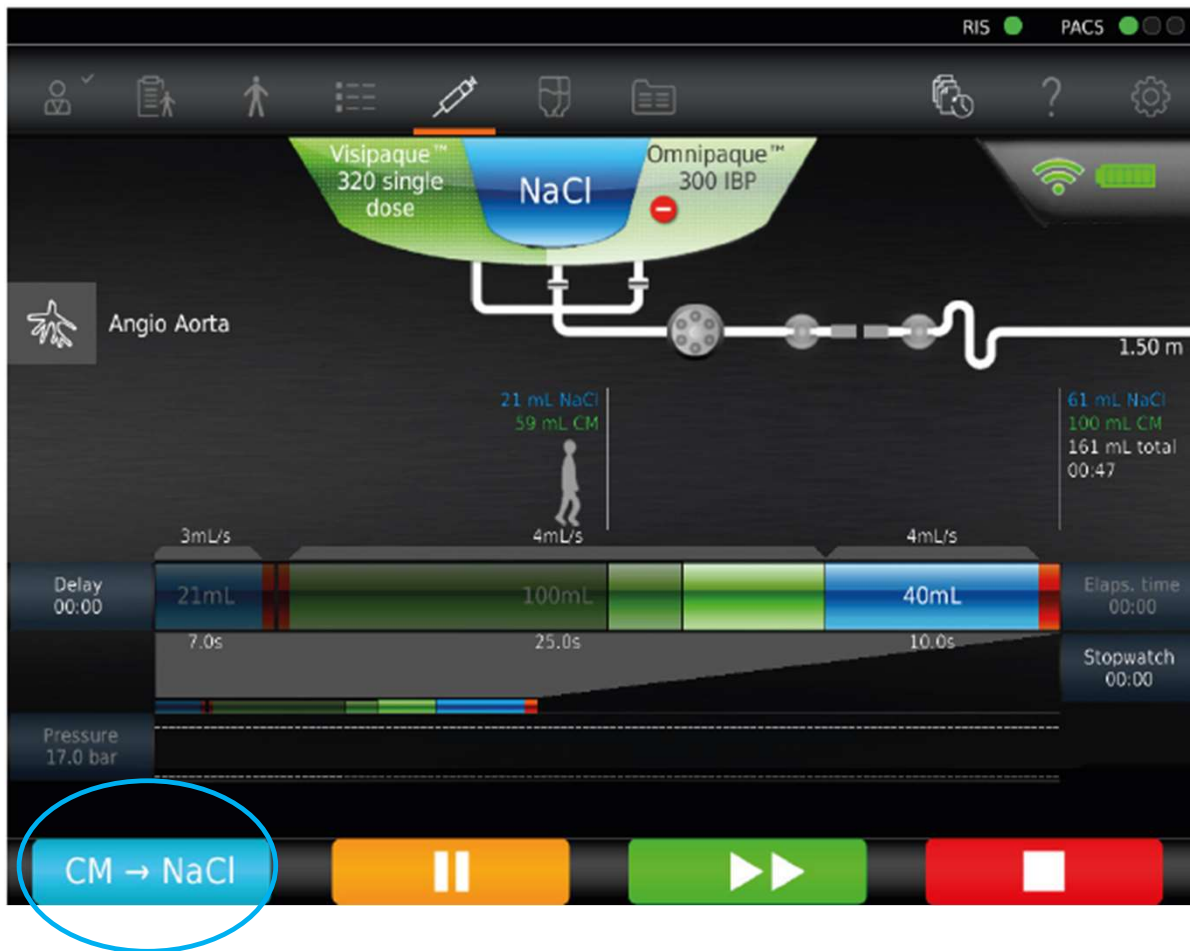
RIS PACS

After the injection is completed:

When sending to PACS, please send at least one image from the scan before sending the injector image.

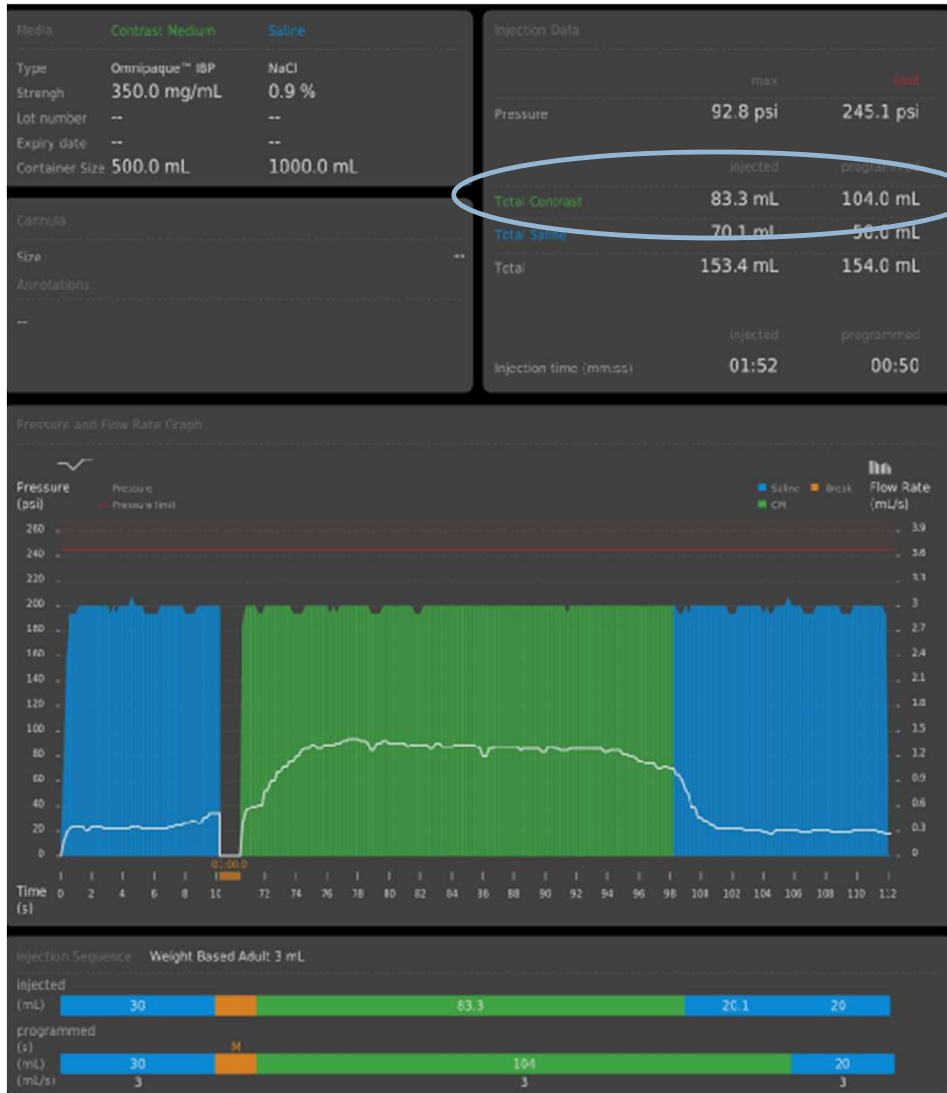
Otherwise, this image will end up in its own jacket in PACS. You will then need to merge the folders in PACS





RIS PACS

Press the blue button "CM-NaCl" to change from contrast to saline if the scan has started.



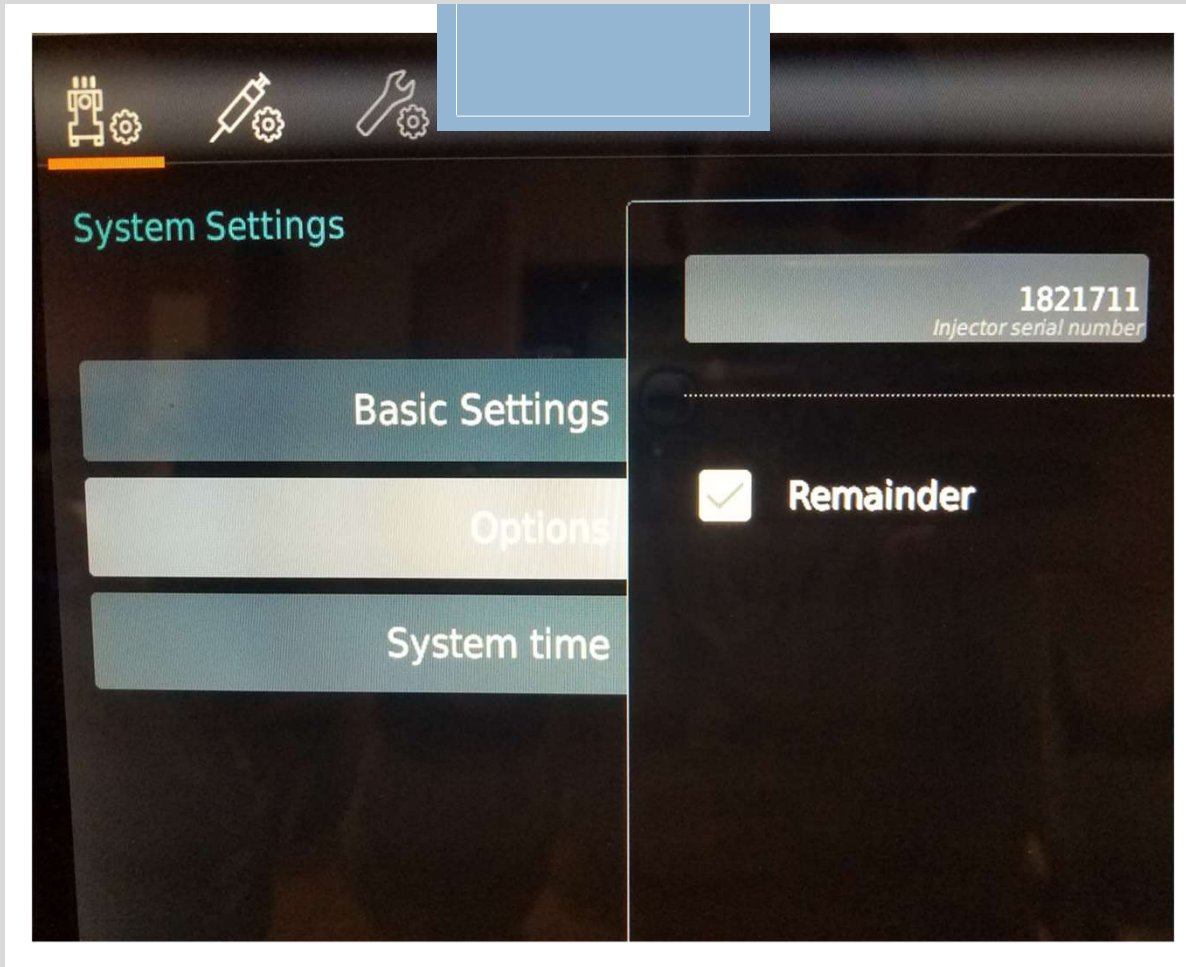
RIS PACS

When changing from contrast to saline you will notice that the total contrast will also change so you can document the amount given to the patient.

CHANGE THE BLUETOOTH TERMINAL TO INJECTOR CONNECTION INSTRUCTIONS

Steps to moving/linking injectors to other terminals:

1. Click settings icon on (upper right corner) terminal
 - a. Go to options (make note of injector serial number)
 - i. CT 4: 2123855
 - ii. CT 3: 2123854
 - iii. CT 2: 2123853
 - iv. CT 1: 2123852
 - v. ER CT: 2123856
 - b. Change the last number on the terminal you want to use to the injector you want to use.
(ex: Moving CT 4 injector to CT 2, on CT 2 terminal put in serial number 2123855)
2. Turn off power on terminal that you want to use (or changed the serial number on) and the injector you are moving.
3. Move injector into scan room you want to use it in.
4. Turn on terminal you want to use by holding power button on.
5. Then turn on the injector you are moving.
6. Finish the “priming” of the lines on the injector.
(FYI they injector may or may not remember the volumes you have of saline and contrast. If you have less than 200 ml of contrast it is suggested to spike a new bottle at this time.)
7. Once finished with your injection and want to move the injector back to original terminal put the terminal you were using back to original serial number and turn terminal off.
8. Move the injector back to original room, turn off the injector, wait 30 seconds, turn back on and it should automatically pair back with its original terminal. You will then need to repeat step 6 from above to reestablish your contrast and saline again with its original terminal.



To find the
injector
serial
number