

Size Selection

Adults:Small/Medium/Large

All Adult Body Protocols are divided into **Small**, **Medium**, and **Large** Adult Protocols.

Small Adult Body Protocols shall be used for all patients with a combined AP plus Lateral size of 60 cm or less.

Medium Adult Body Protocols shall be used for all patients with a combined AP plus Lateral size of greater than 60 cm and less than 80 cm.

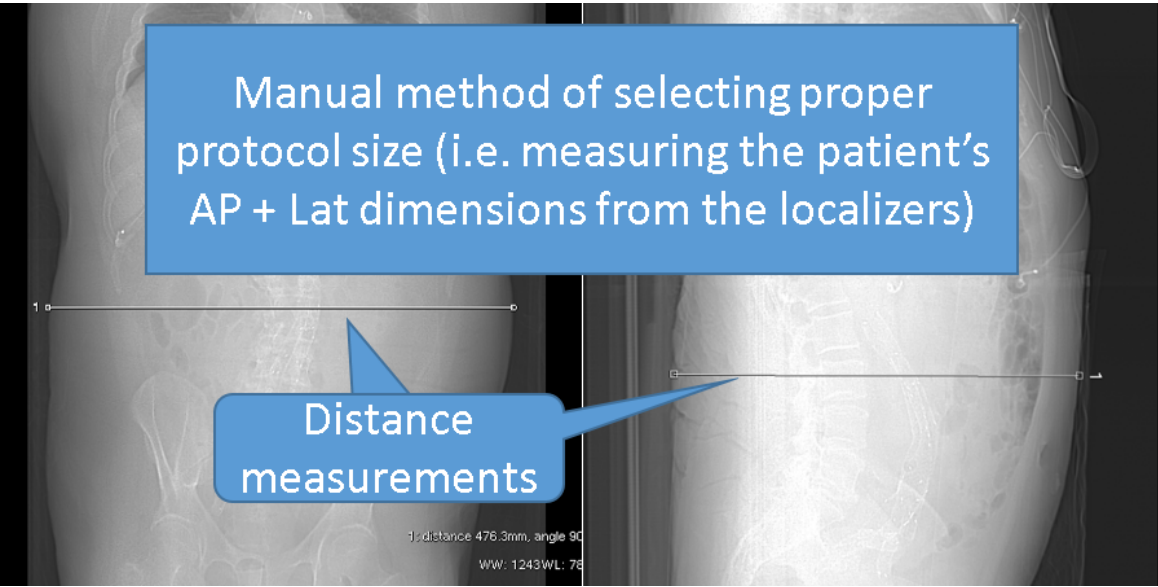
Large Adult Body Protocols shall be used for all patients with a combined AP plus Lateral size of 80 cm or greater.

These sizes shall be measured off of the Scout image over the largest anatomy of clinical interest.

With the use of these 3 protocols, matched to patient size, there should not be any need for the CT technologist to make further adjustments to the scan techniques when scanning any patient.



Use the DFOV overlay on the CT localizers to pick the correct sized protocol. When you size patients this way, no digital caliper measurements are needed.
Top Row: large patient that needs to be scanned with the large protocol.
Bottom Row: medium patient that needs to be scanned with the medium protocol.



Pediatrics: Color Code

When selecting the patient size protocol to use, the combined AP plus Lateral Size of the patient is the primary determining factor. This sum of the AP plus Lateral dimensions of the patient should be measured off of the scout image over the largest anatomy of clinical interest. For accurate measurement,

the patient must be properly centered. Also the window width must be adjusted wide enough so that the measurements can be taken from the surface of the skin. For patients with a combined AP plus Lateral Size above 60 cm, use a Medium Adult protocol.

The pediatric color coding scheme divides pediatric into five sizes coded by color. The approximate age of patients and size ranges are given as follows:

Pink Newborns. Typical AP + Lateral size of 0-26 cm.

Red/Purple 6 months-2.5 years. Typical AP + Lateral size of 27-31 cm.

Yellow/White 3-7 years. Typical AP + Lateral size of 32-37 cm.

Blue/Orange 8-12 years. Typical AP + Lateral size of 38-43 cm.

Green/Black 13-18 years. Typical AP + Lateral size of 44-60 cm.

The 9 colors that are used in this scheme are derived from the Broselow tape scale which was originally used to color code doses of medication given in pediatric care.

Neuro: Adult/Adolescent/Child/Infant

Some of the Neuro protocols have scan parameters that are divided into 4 groups for: Adult (18+ years old), Adolescent (7-17 years old), Child (3-6 years old), and Infants (0-2 years old). See separate Adult and Pediatric Neck and C -Spine sizing guidelines.

Retrieved from "http://ctwiki.uwhealth.org/mediawiki/index.php?title=Size_Selection&oldid=78754"

This page was last edited on 4 June 2021, at 13:59.